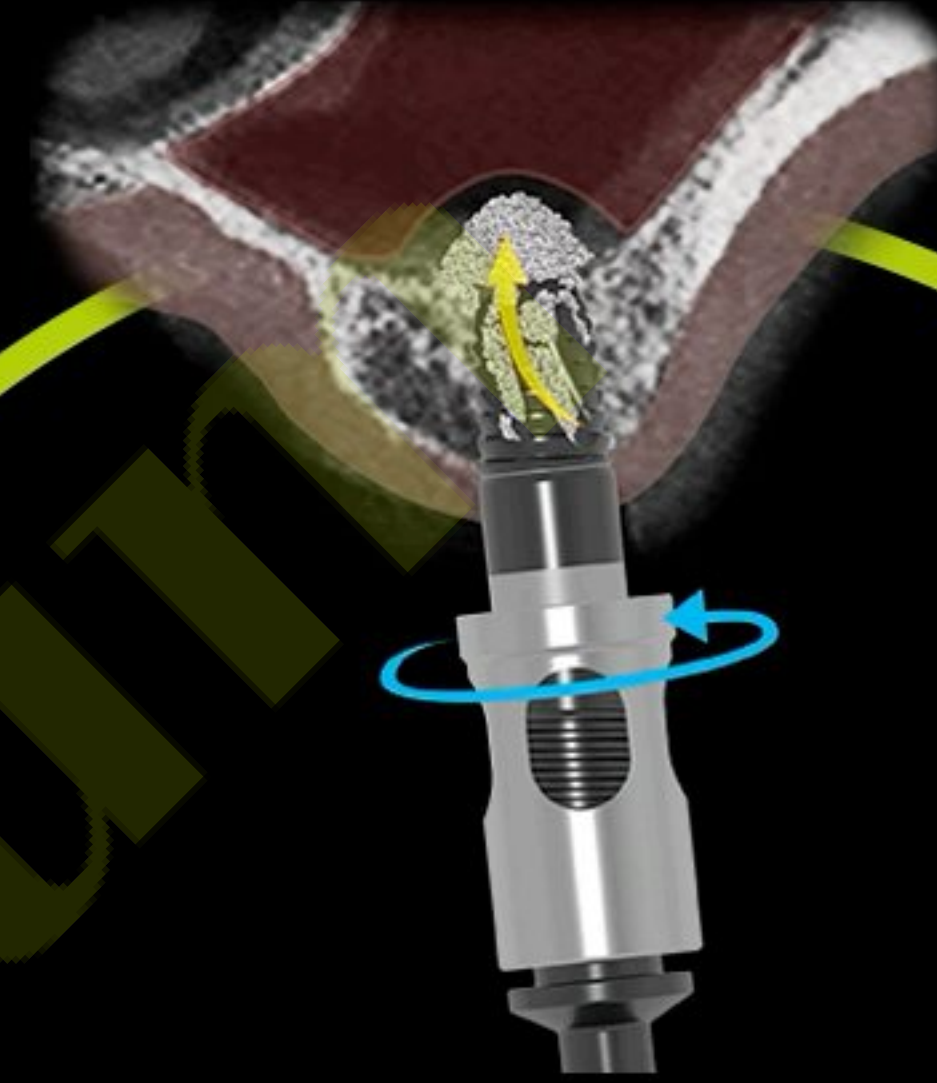


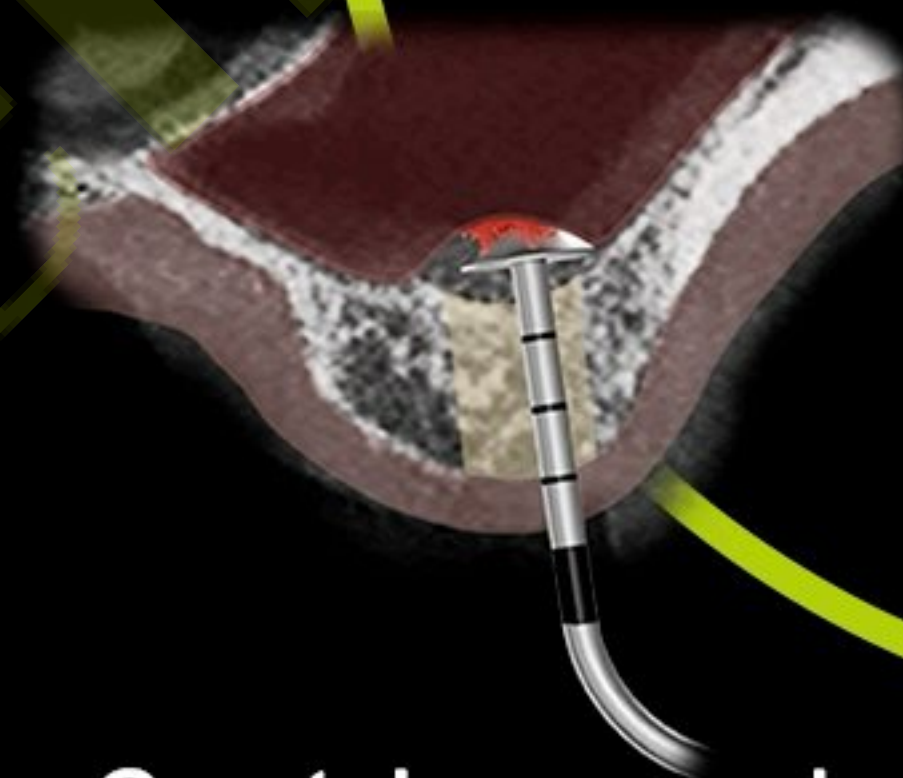
DASK *Simple*

Hands-on guide

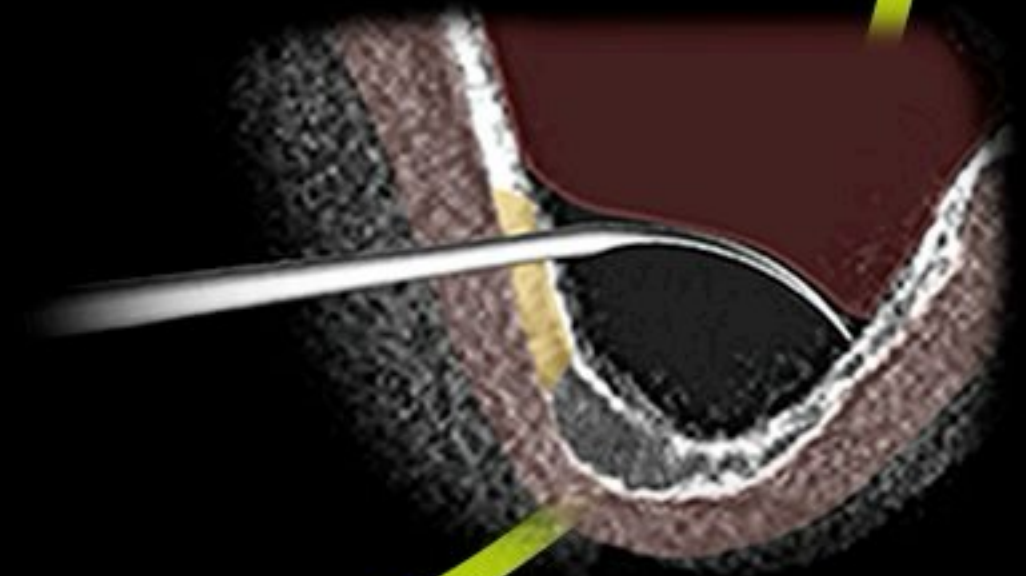
Bicortical Fixation



Crestal approach



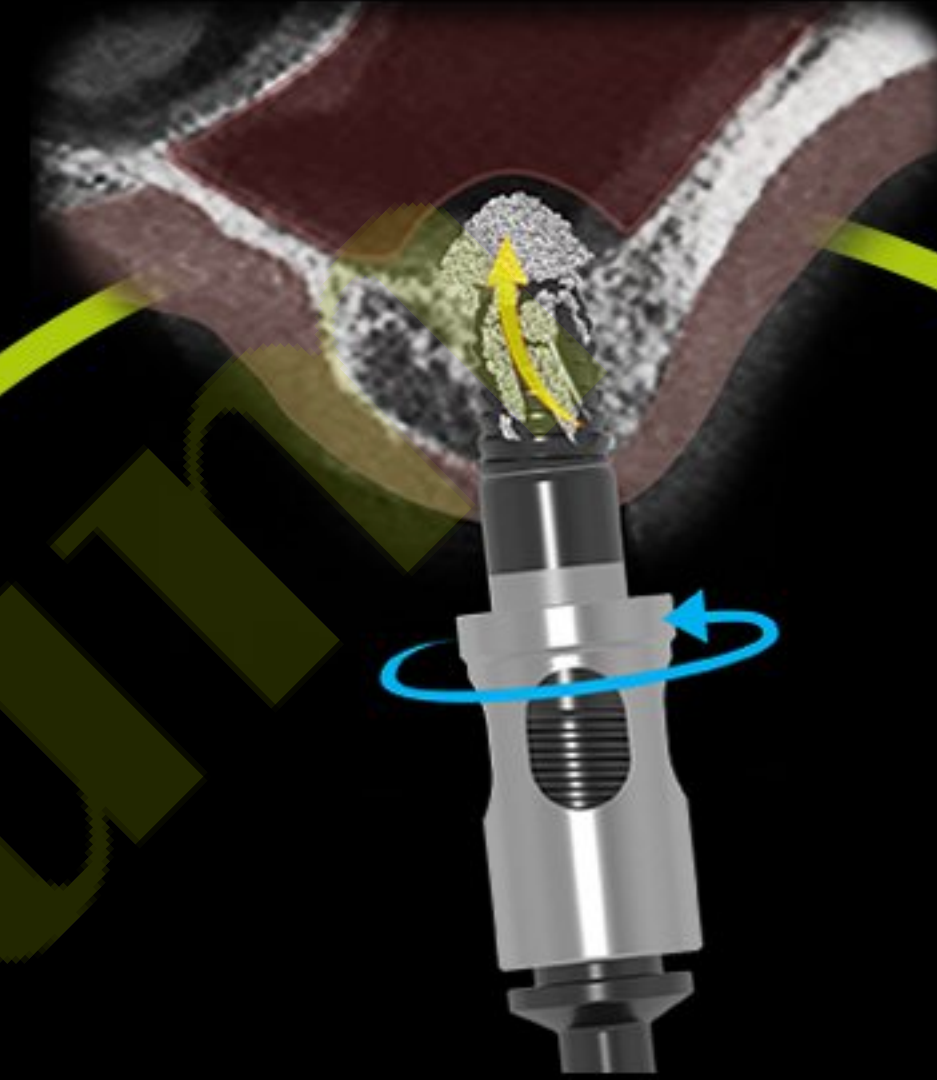
Lateral approach



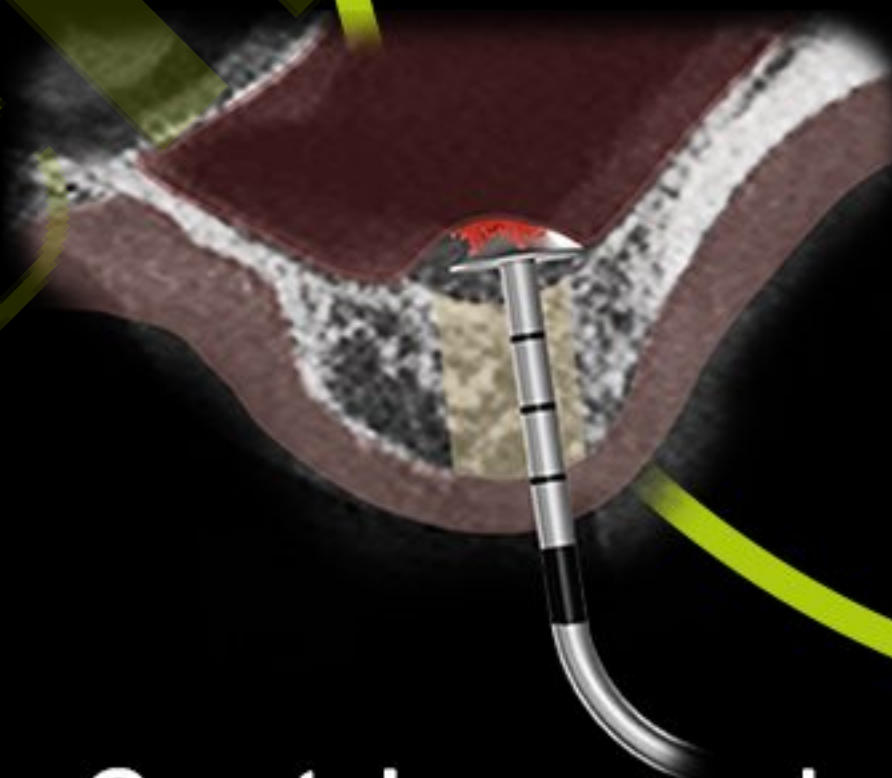
DASK *Simple*

Hands-on guide

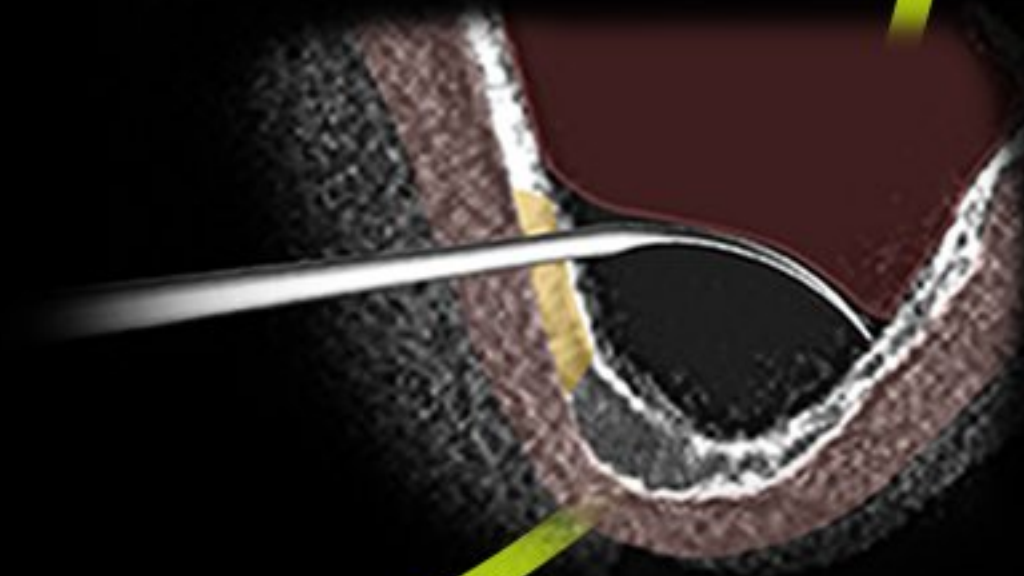
Bicortical Fixation

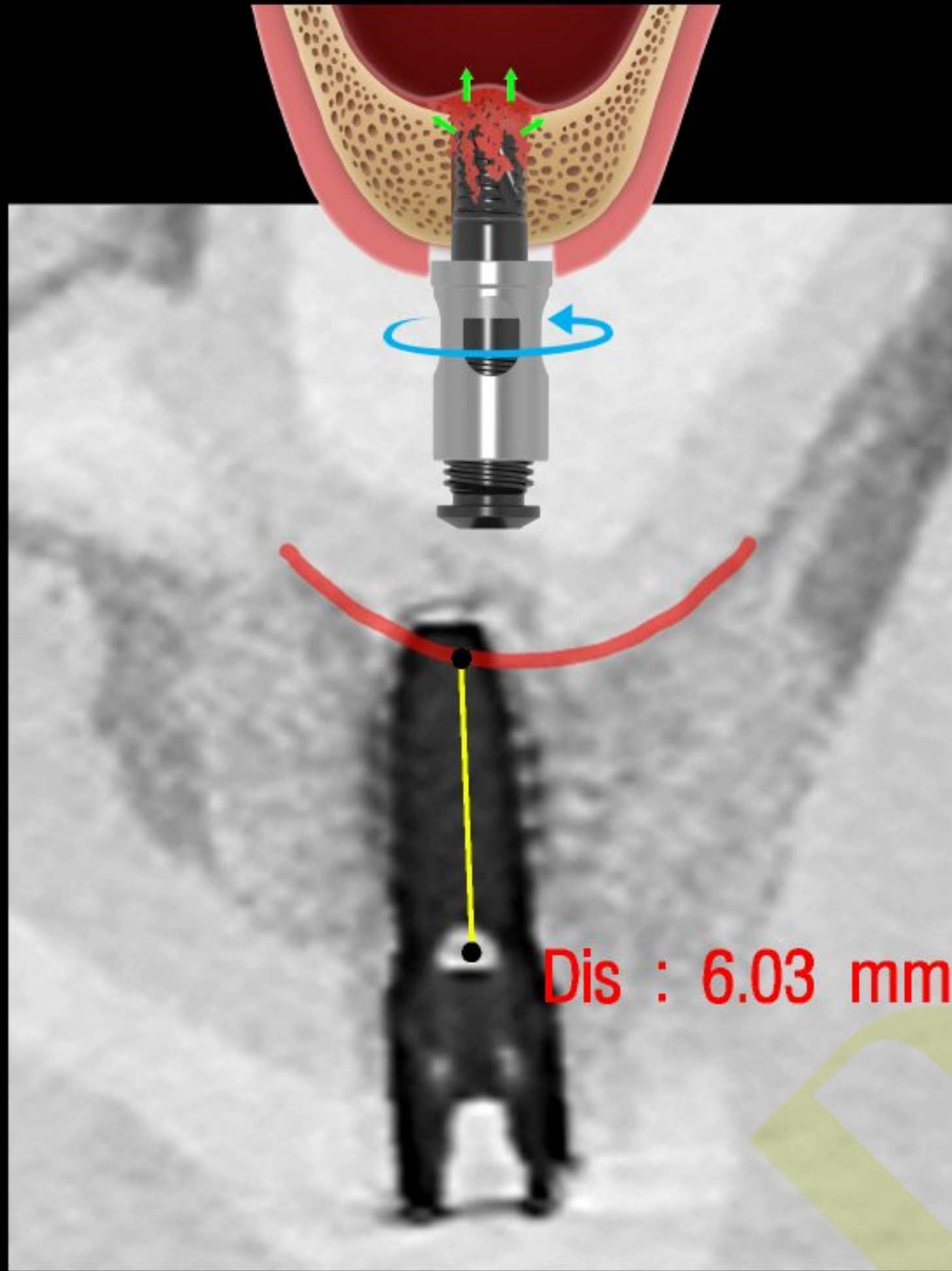


Crestal approach



Lateral approach



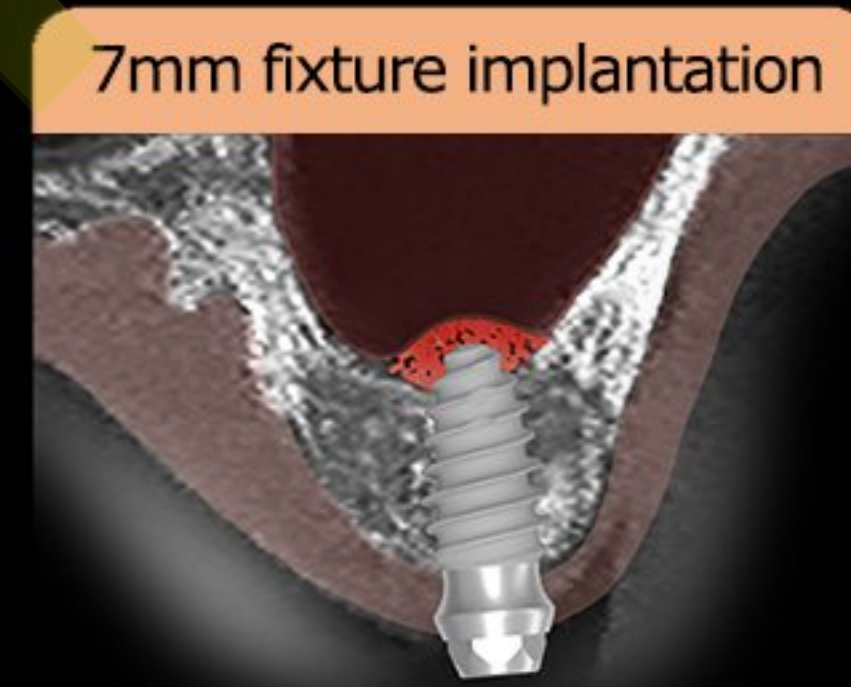
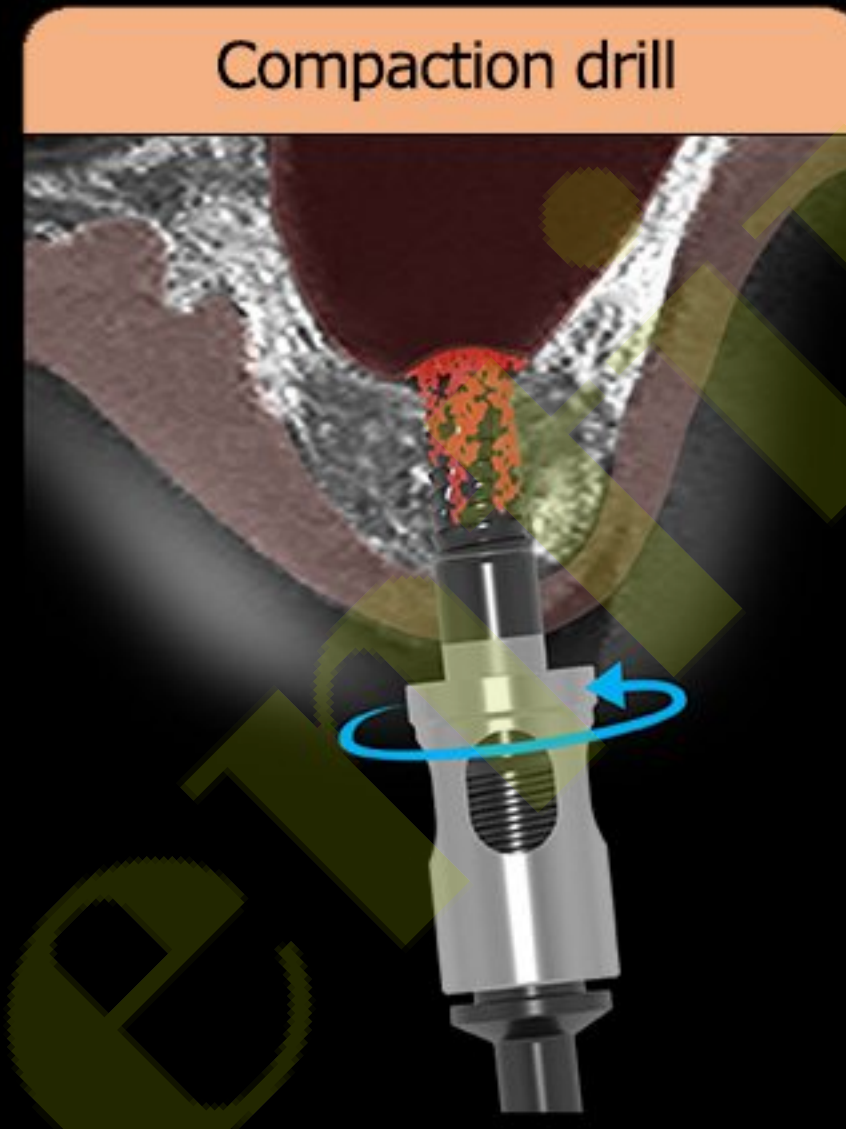
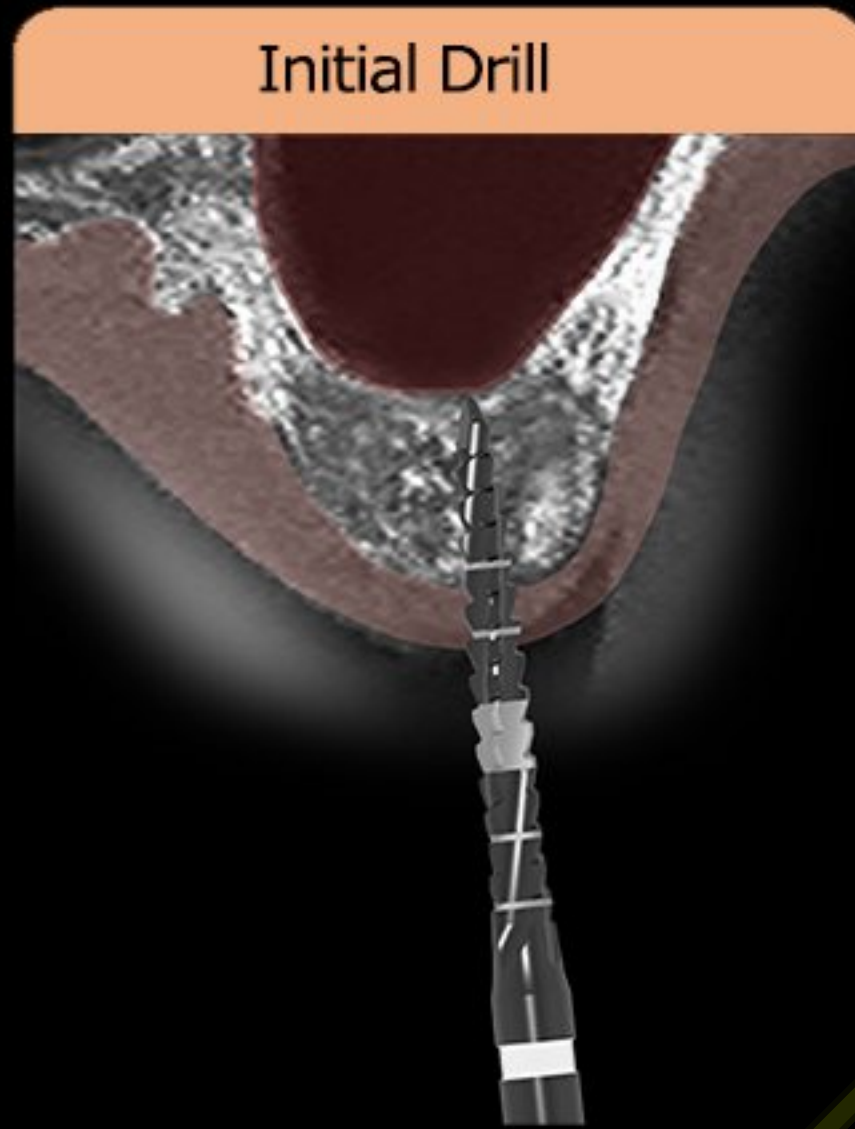


Hands-on guide

DASK *Simple*

Bicortical fixation

Bicortical fixation



#25 Bicortical Fixation



Early loading protocol

One size under drilling

Bone spreader

Longer and wider implant

Drilling protocol depend on bone quality

Soft bone - one size **under** drilling

Normal bone - normal drilling

Hard bone - one size **over** drilling



Tissue Level

bright Implant



Bone Level

Tissue Level

Dentium

3

Tissue Level

20°

1.5mm

Up

Primary Stability

Bone Level

10°

3.7mm

Deep and Strong

Narrow but Strong



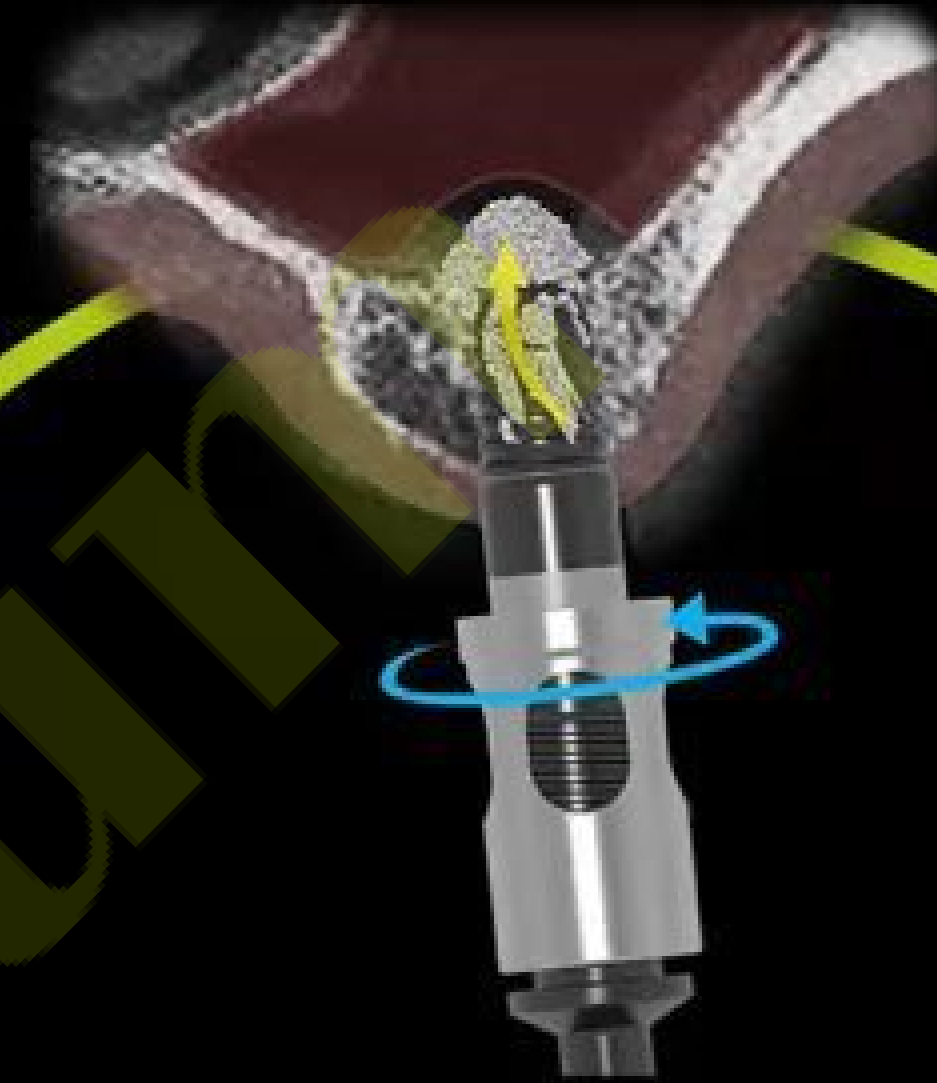
remaining bone
5 mm over

This image shows a cross-section of a joint, likely a hip, with a dark red articular surface and a porous, metallic-looking implant. A yellow double-headed arrow indicates a 5 mm gap between the implant and the remaining bone. A yellow text box with the text 'remaining bone 5 mm over' is positioned next to the arrow. A large, semi-transparent 'D' watermark is visible across the center of the image.

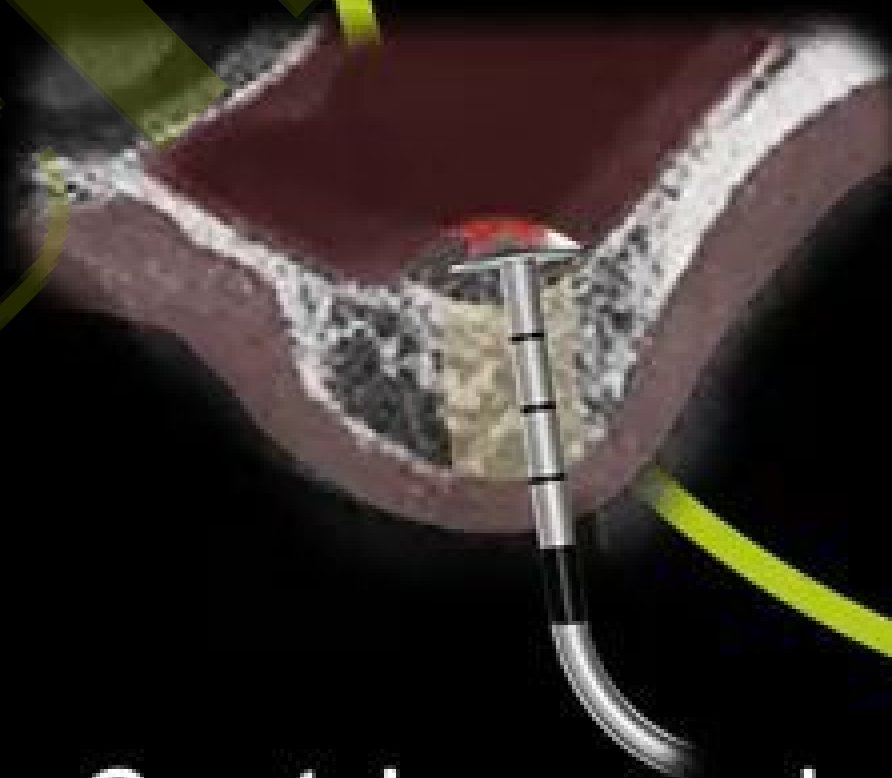
DASK *Simple*

Hands-on guide

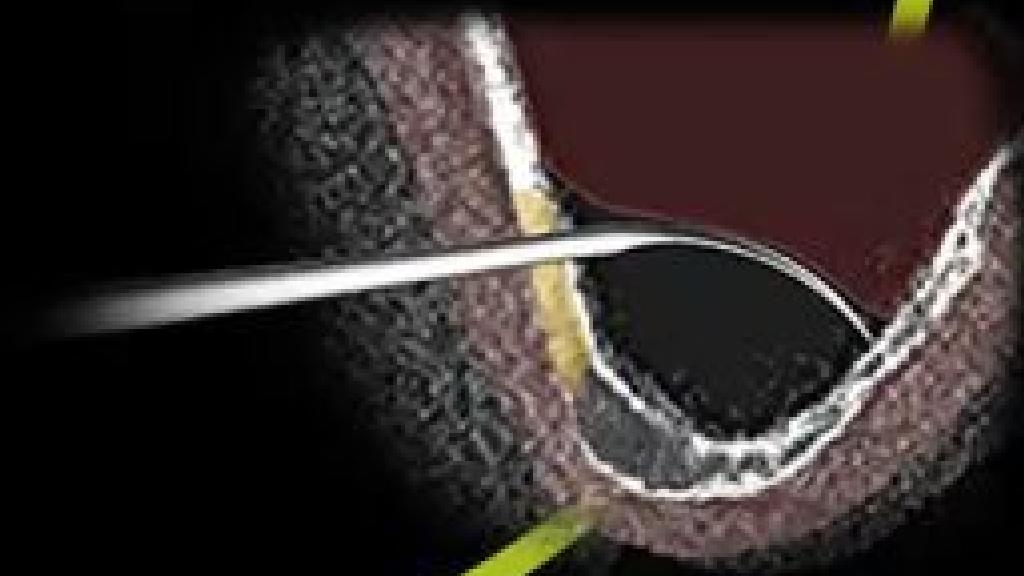
Bicortical Fixation

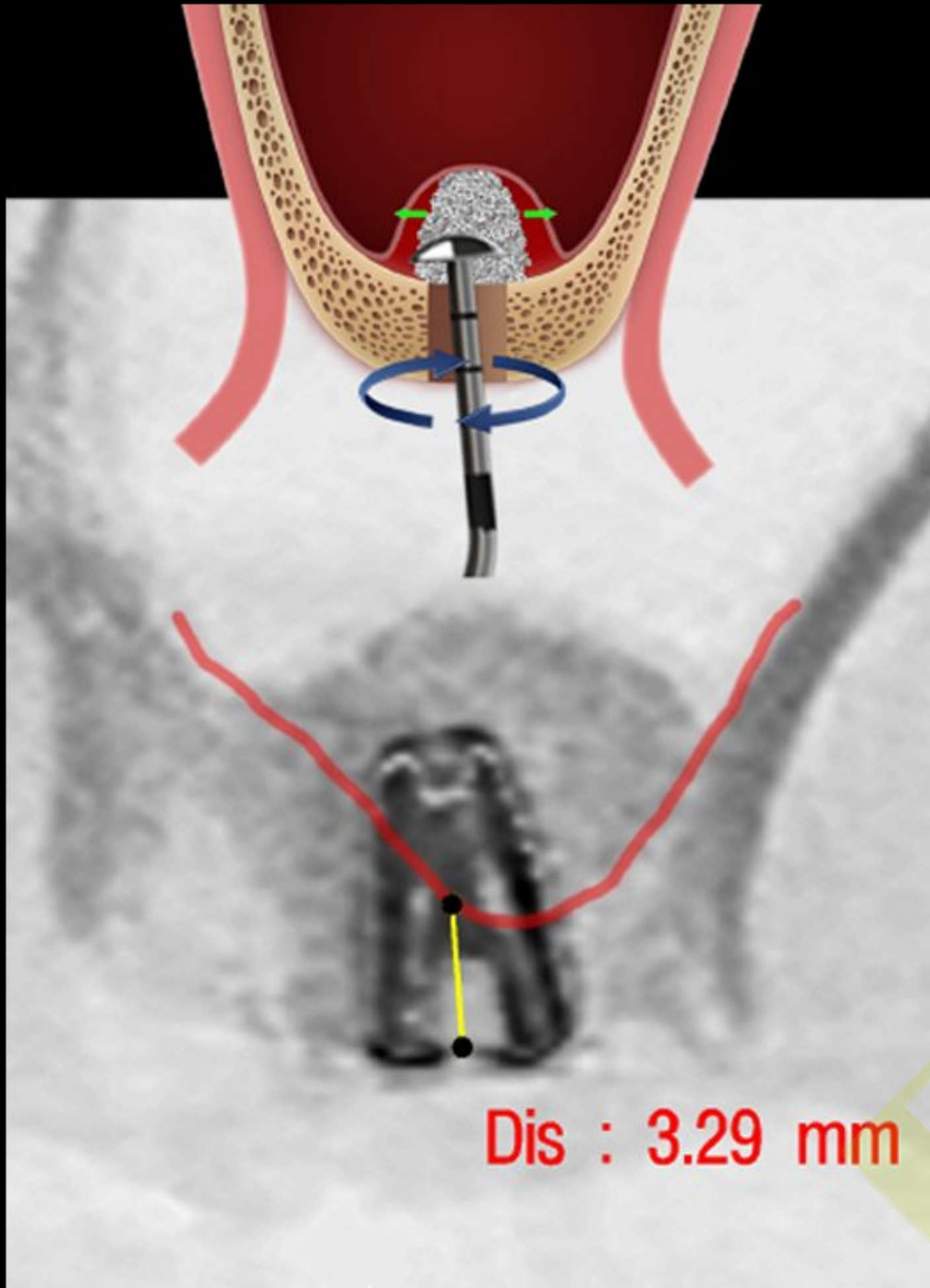


Crestal approach



Lateral approach



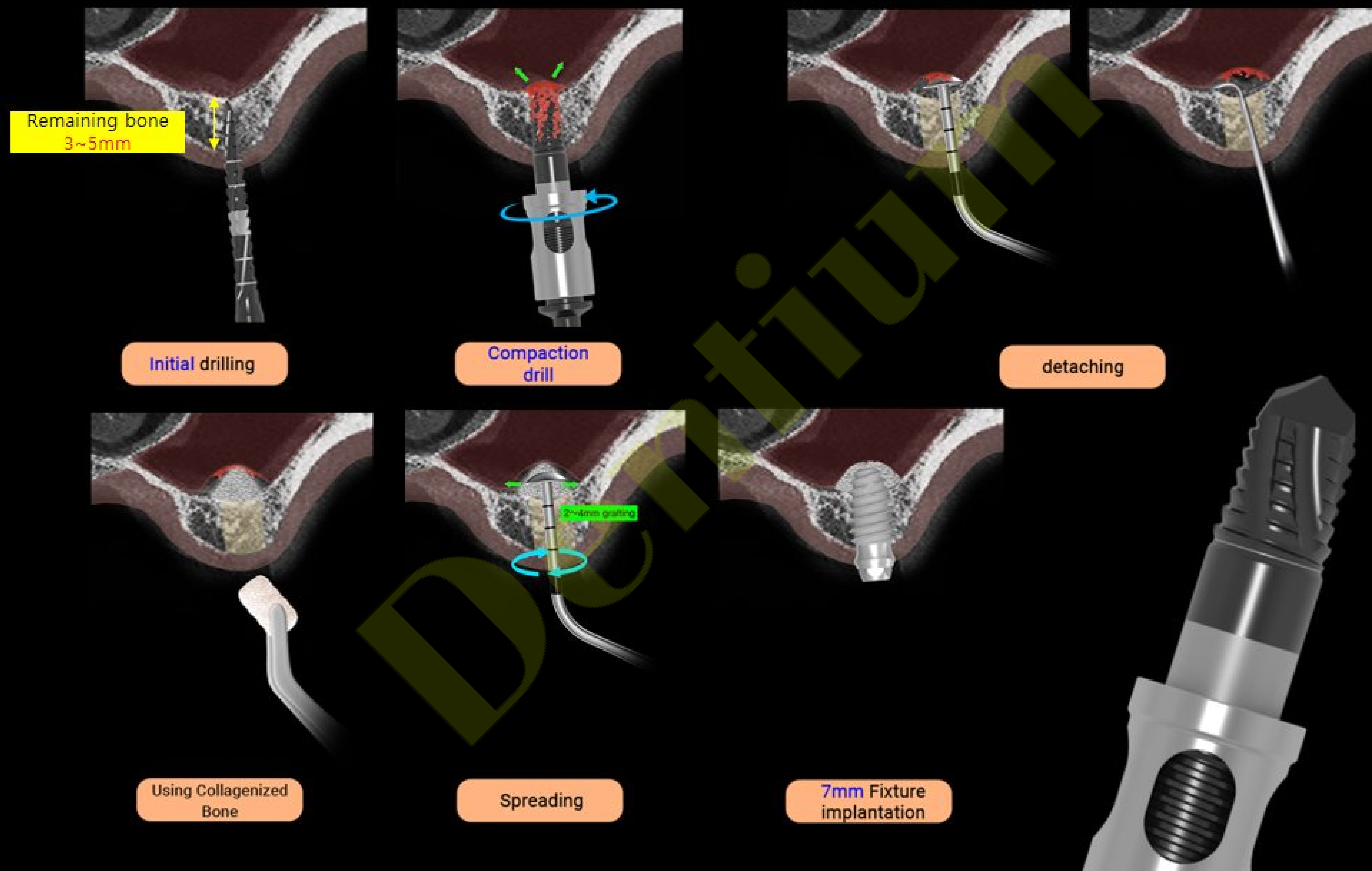


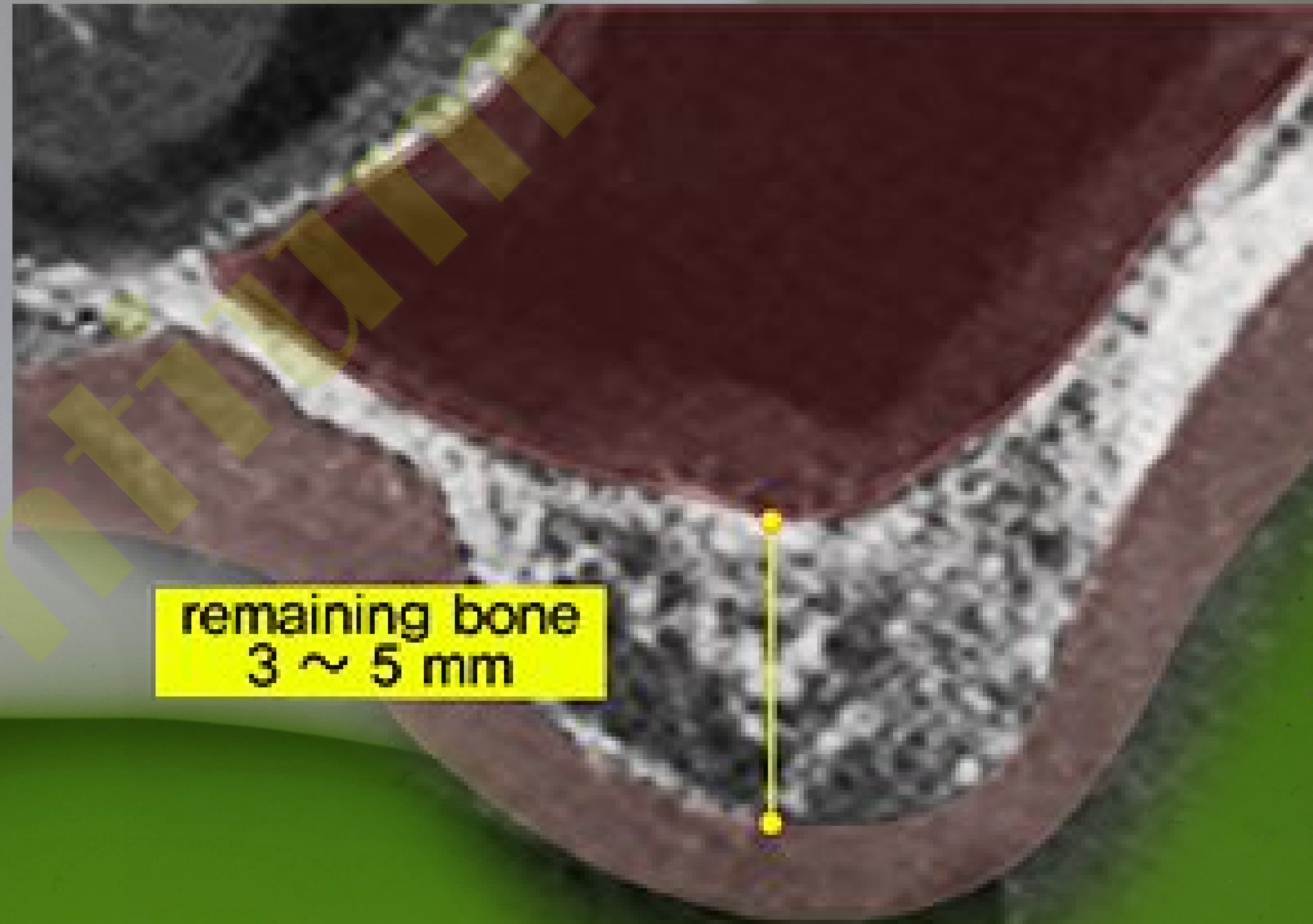
Hands-on guide

DASK *Simple*

Crestal approach

Crestal approach





remaining bone
3 ~ 5 mm

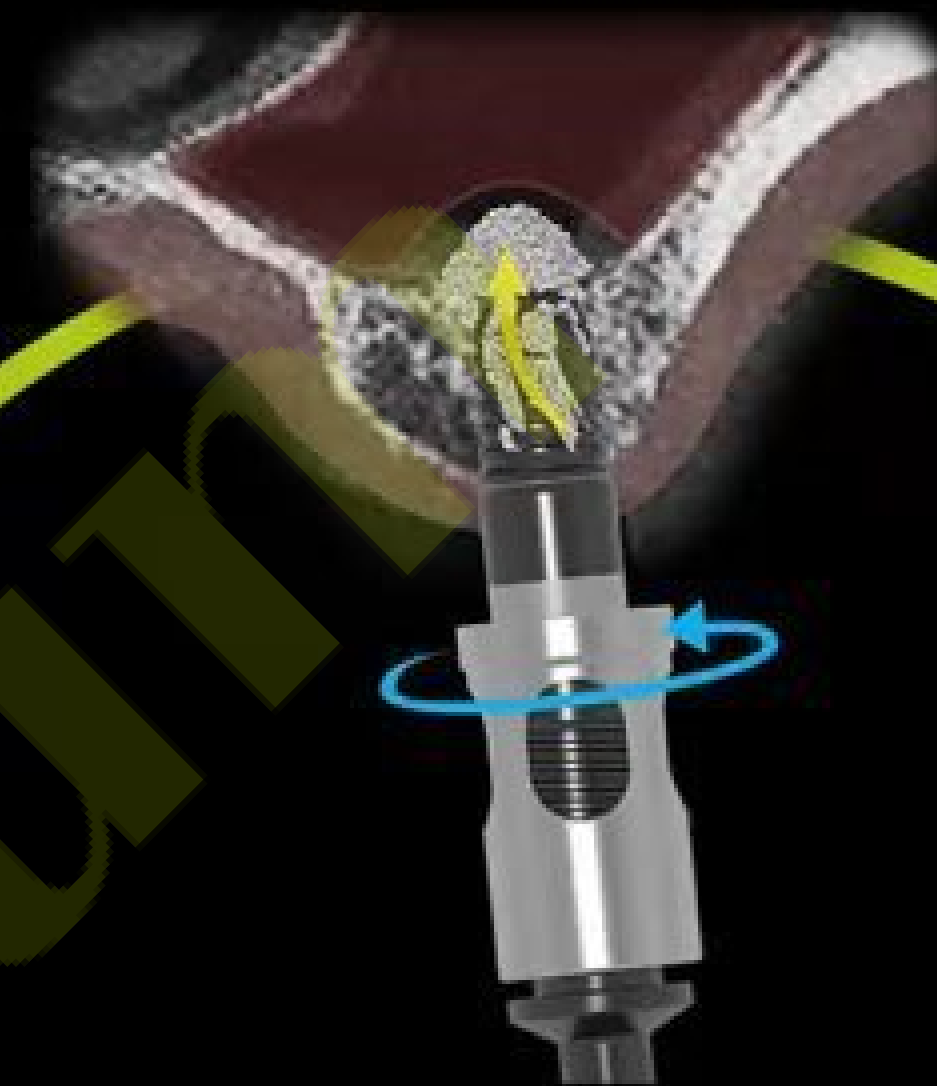
#27 Crestal approach



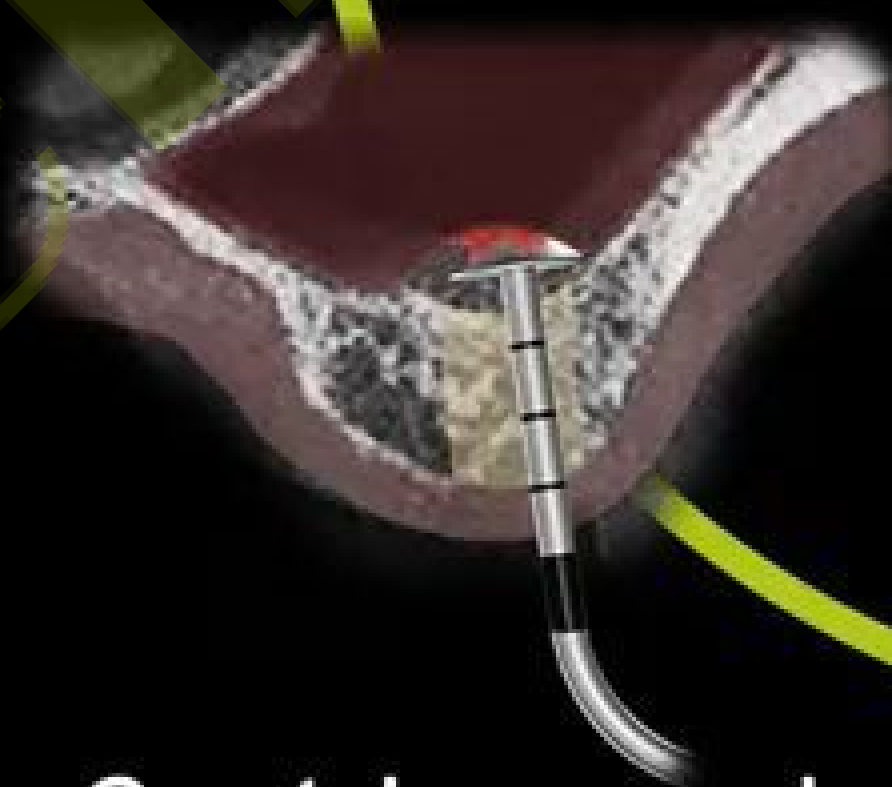
DASK *Simple*

Hands-on guide

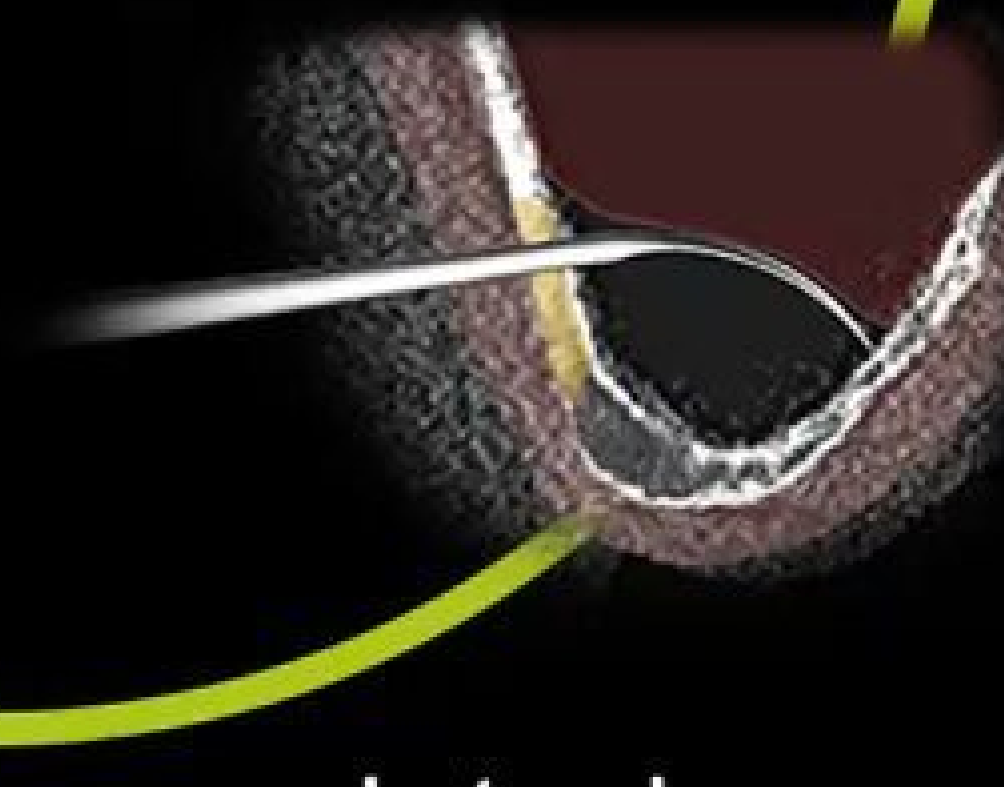
Bicortical Fixation

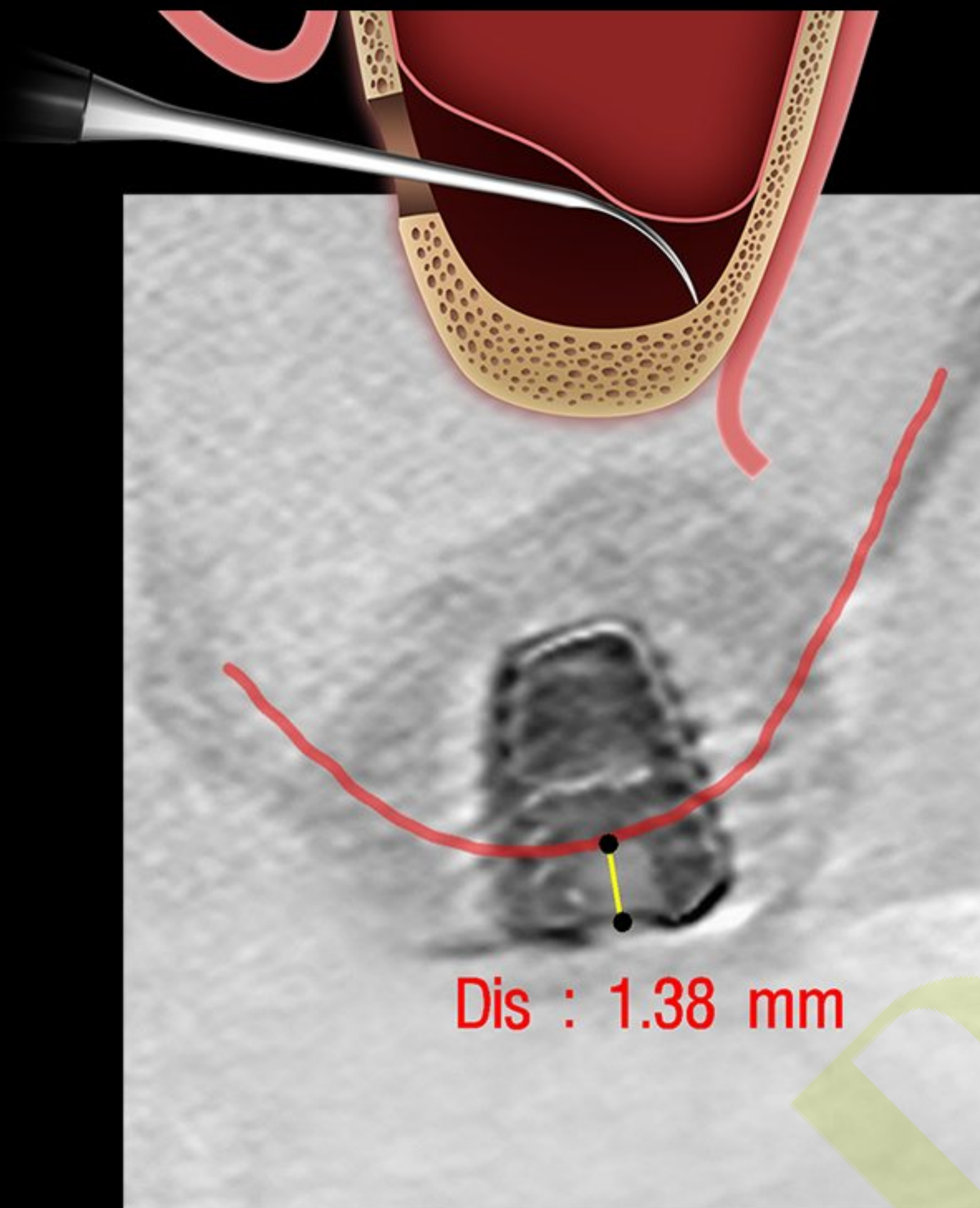


Crestal approach



Lateral approach





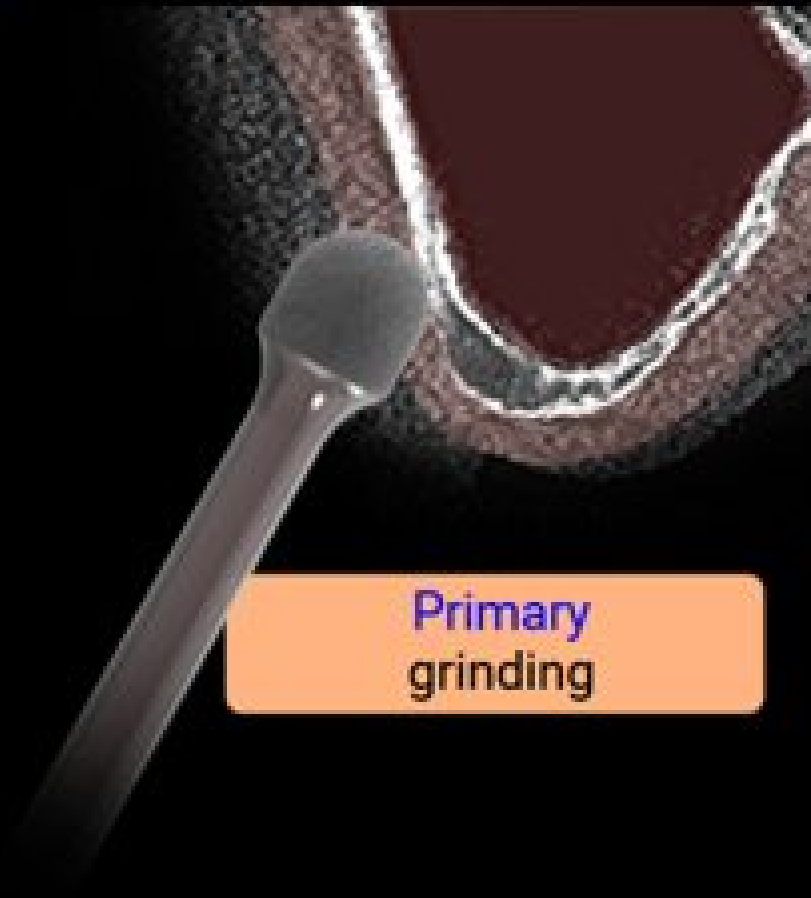
Hands-on guide

DASK *Simple*

Lateral approach

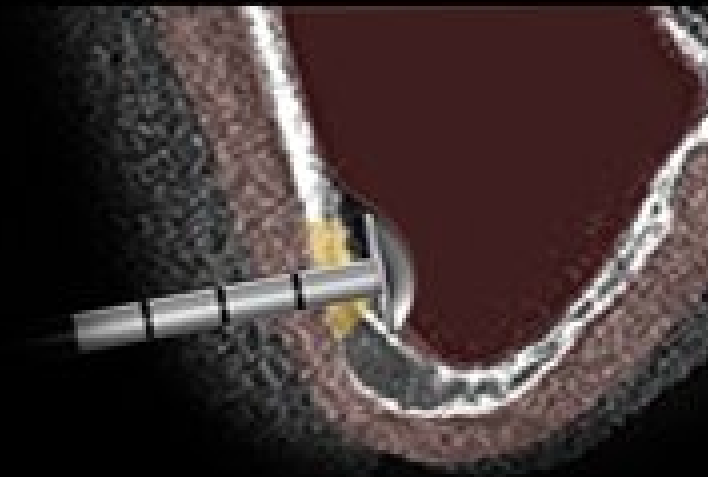
Lateral approach

1
step

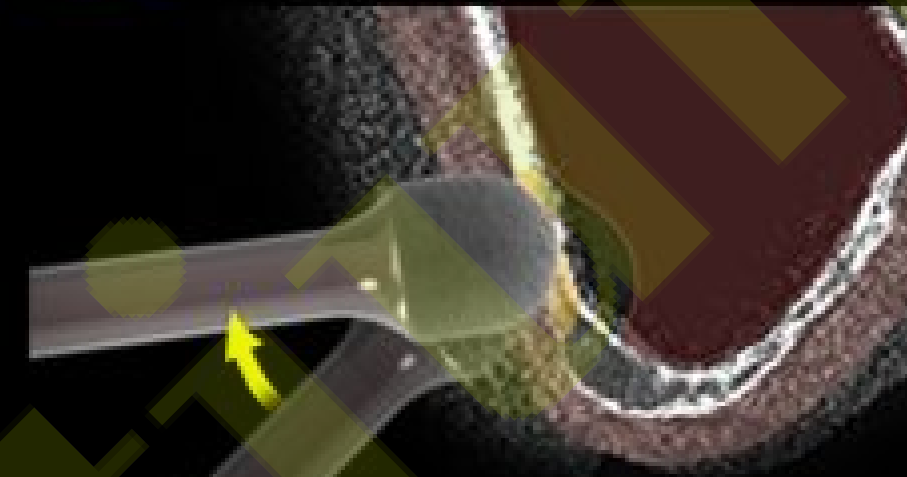


Primary grinding

2
step

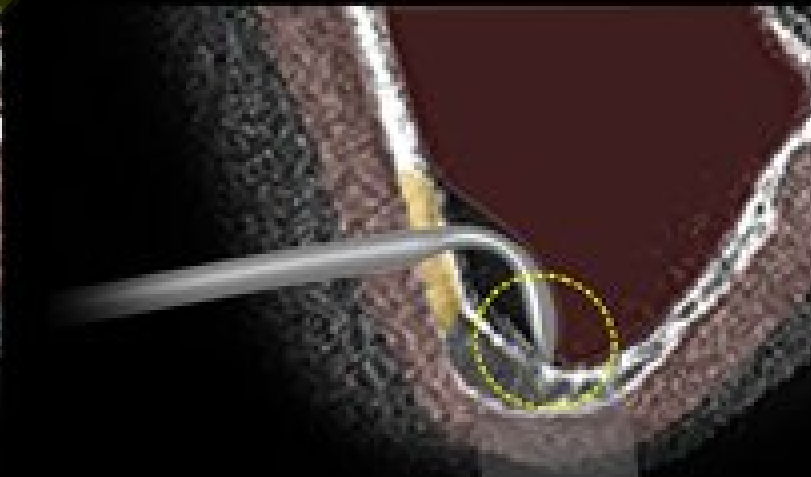


Initial detaching

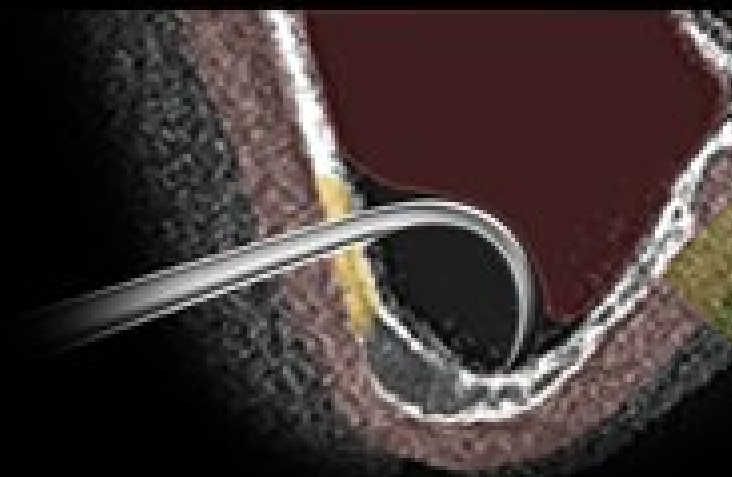


Secondary grinding

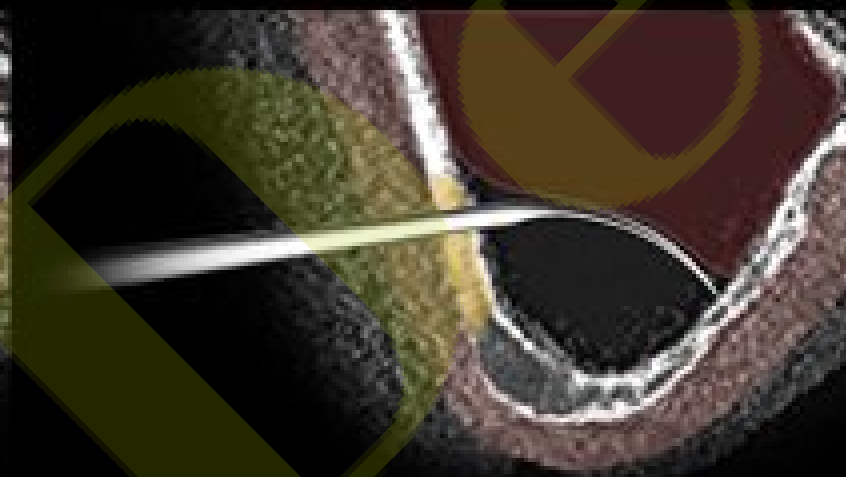
2 step grinding-out technique



detaching



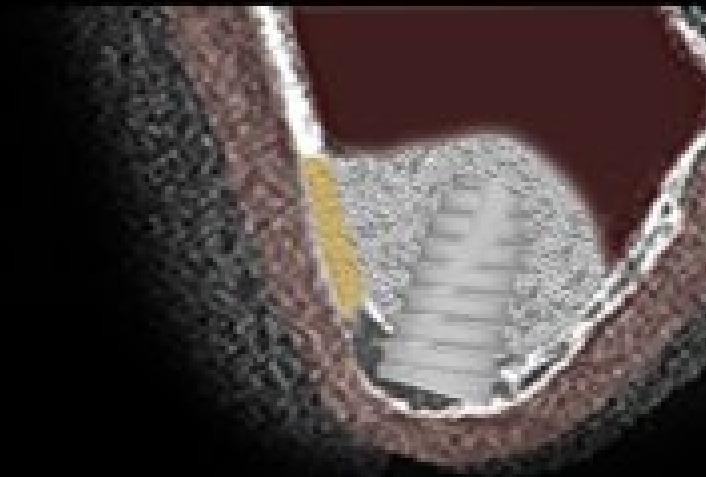
detaching



detaching

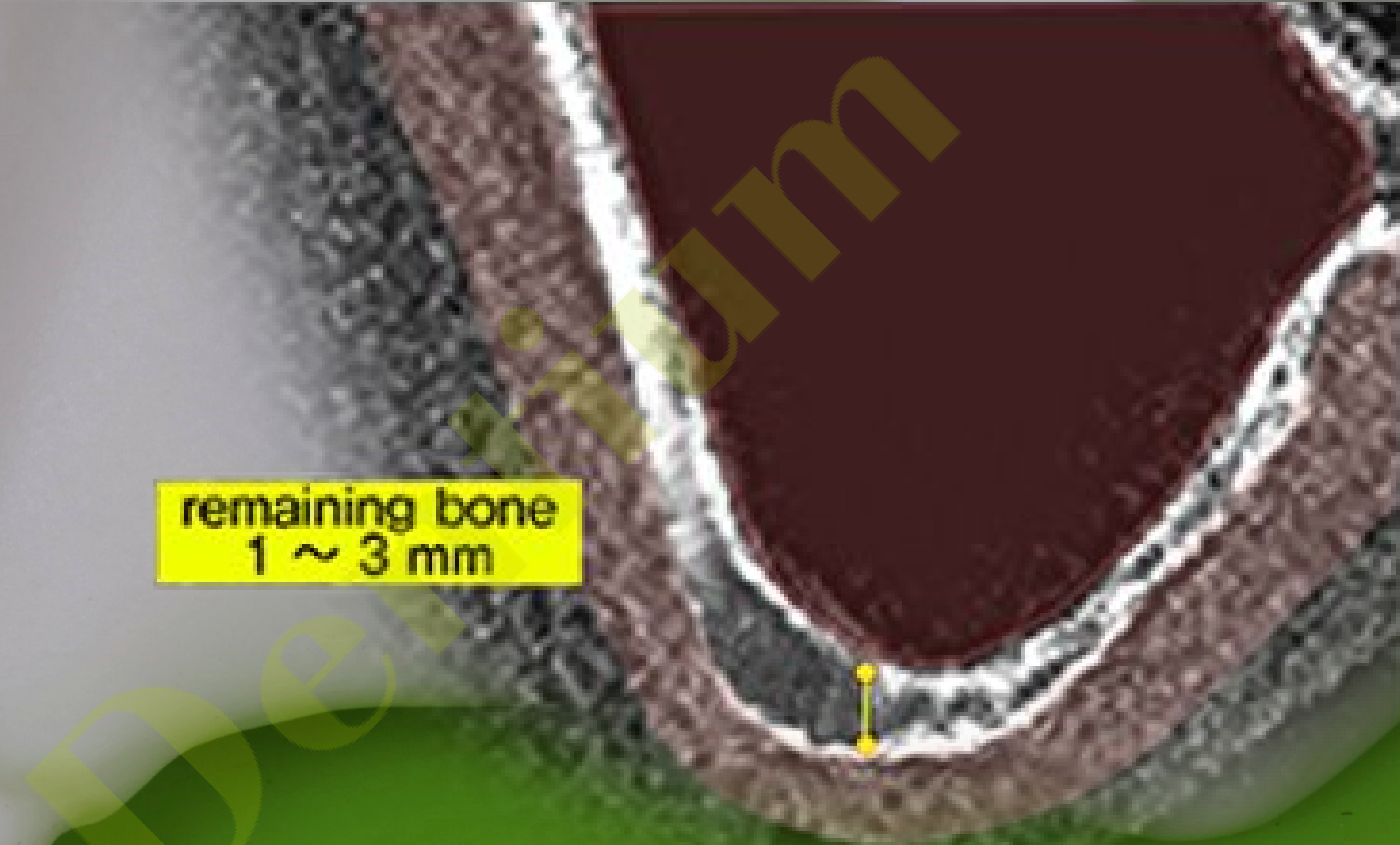


Using Collagenized Bone



7mm Fixture implantation

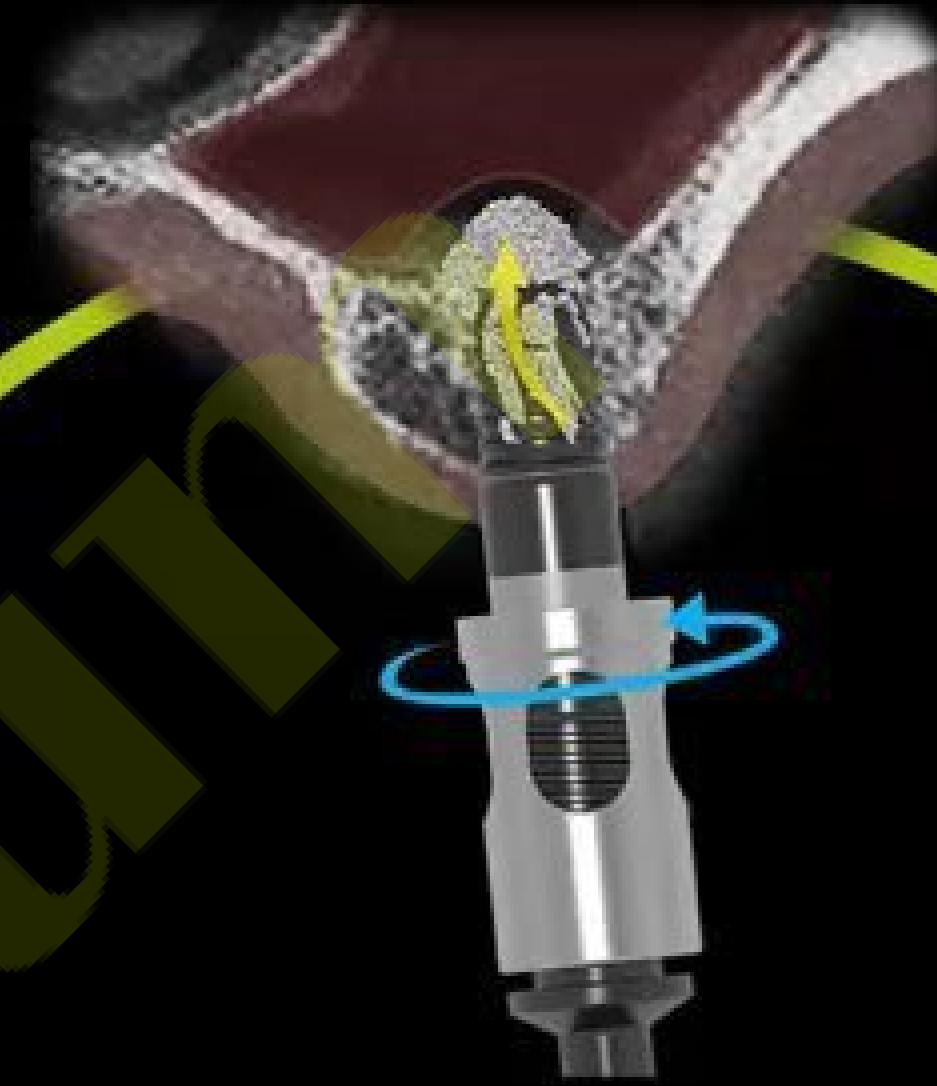
remaining bone
1 ~ 3 mm



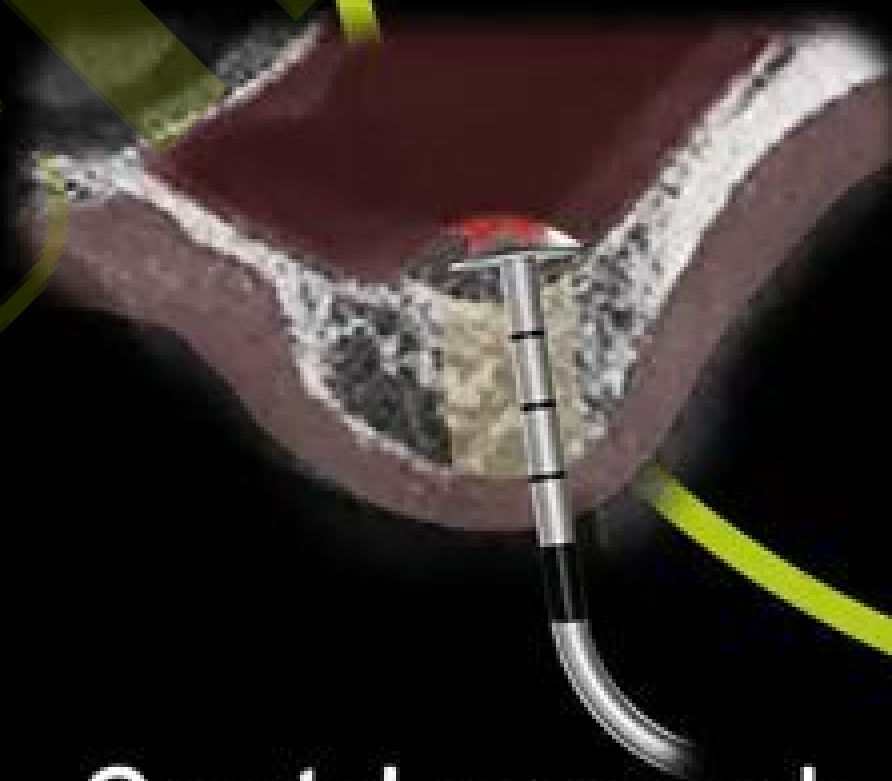
DASK *Simple*

Hands-on guide

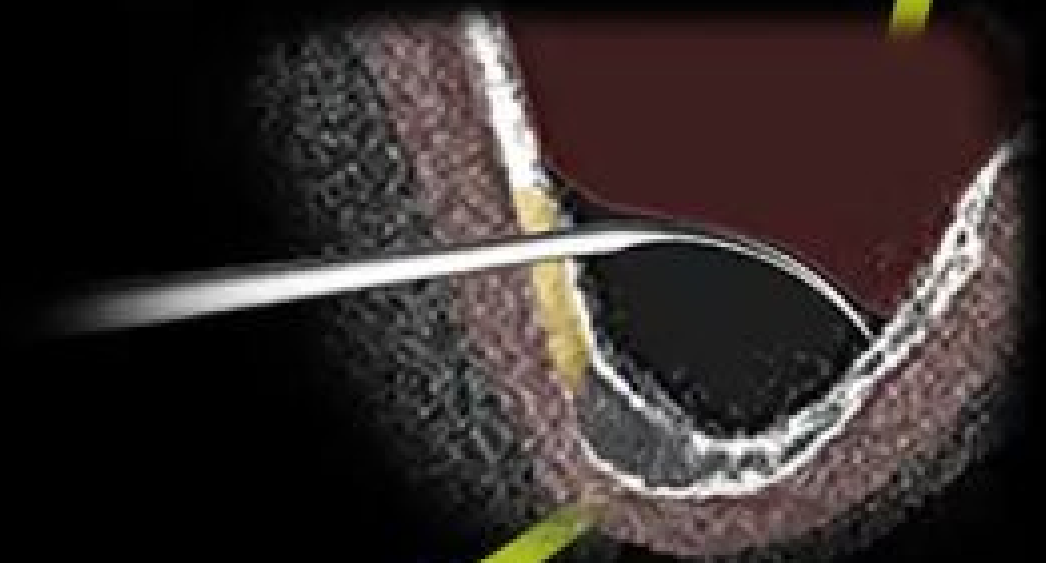
Bicortical Fixation



Crestal approach



Lateral approach





Digital Abutment

Available for Healing, Impression, Scan, **Permanent Abutment**



Scan Comfort Cap

Available for Healing, Impression, Scan